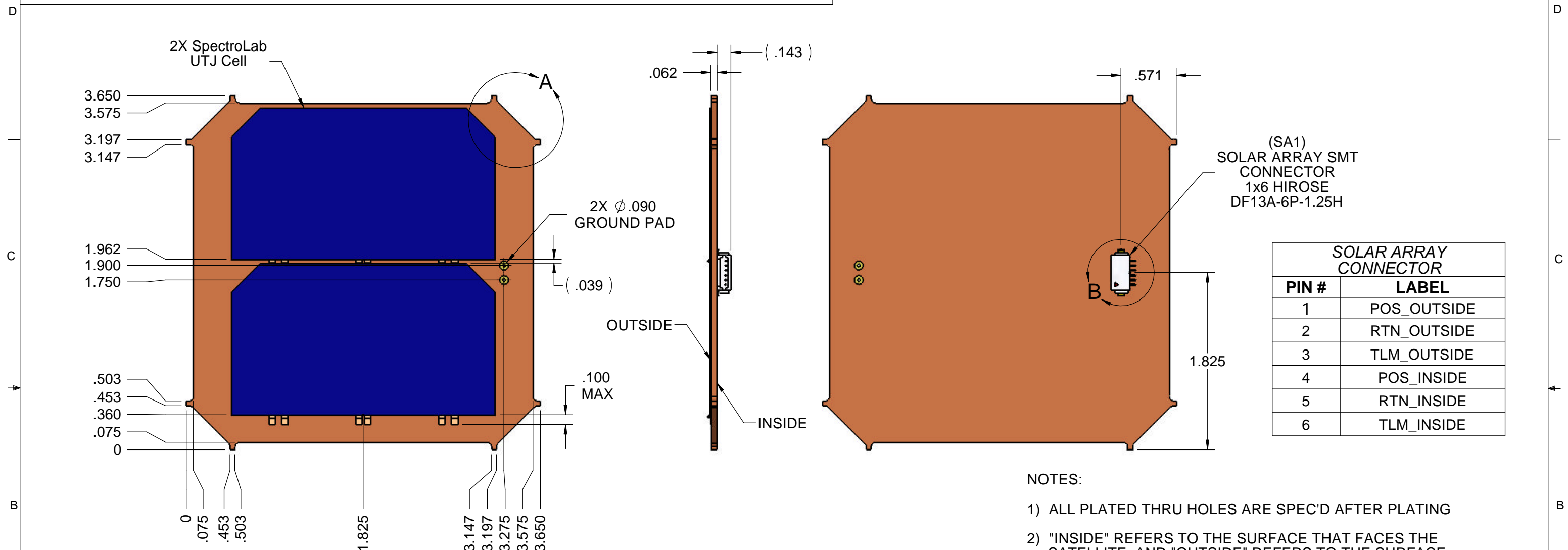


PROPRIETARY NOTICE

NOTICE IS HEREBY GIVEN THAT THIS DOCUMENT EMBODIES A CONFIDENTIAL PROPRIETARY DESIGN OR IS PART OF A CONFIDENTIAL PROPRIETARY DESIGN ORIGINATED BY OURSELVES OR ONE OF OUR CUSTOMERS, AND ALL DESIGN, MANUFACTURING, PREPRODUCTION USE AND SALE RIGHTS REGARDING THE SAME ARE EXPRESSLY RESERVED. IT IS SUBMITTED UNDER A CONFIDENTIAL RELATIONSHIP FOR A SPECIFIC PURPOSE, AND THE RECIPIENT BY ACCEPTING THIS DRAWING AGREES NOT TO SUPPLY OR DISCLOSE ANY INFORMATION REGARDING IT TO ANY UNAUTHORIZED PERSON, OR TO INCORPORATE IN OTHER PROJECTS, ANY SPECIAL FEATURES PECULIAR TO THIS DESIGN.

REVISION HISTORY

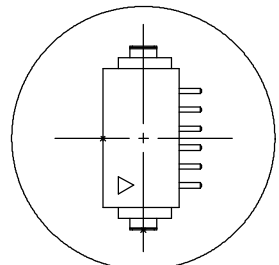
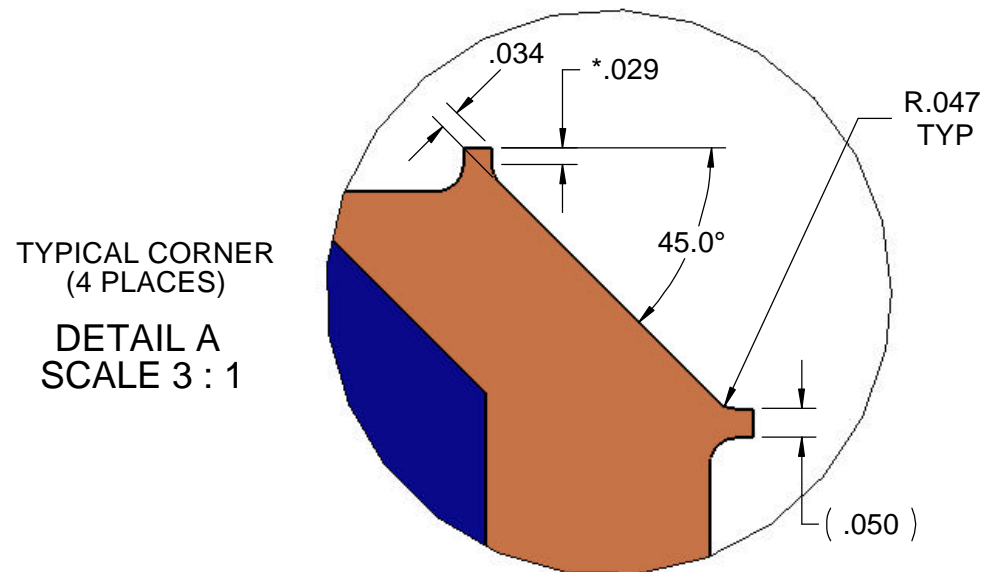
REV	LOC	DESCRIPTION	DATE	APP'VD



SOLAR ARRAY CONNECTOR	
PIN #	LABEL
1	POS_OUTSIDE
2	RTN_OUTSIDE
3	TLM_OUTSIDE
4	POS_INSIDE
5	RTN_INSIDE
6	TLM_INSIDE

NOTES:

- 1) ALL PLATED THRU HOLES ARE SPEC'D AFTER PLATING
- 2) "INSIDE" REFERS TO THE SURFACE THAT FACES THE SATELLITE, AND "OUTSIDE" REFERS TO THE SURFACE THAT FACES AWAY FROM THE SATELLITE, WHEN LOADED IN THE LAUNCH SYSTEM.
- 3) DIMENSIONS WITH AN ASTERISK (*) ARE MARKING A TANGENCY POINT.
- 4) REFER TO SHEET #2 FOR KEEP-OUT ZONES ON THE INSIDE.



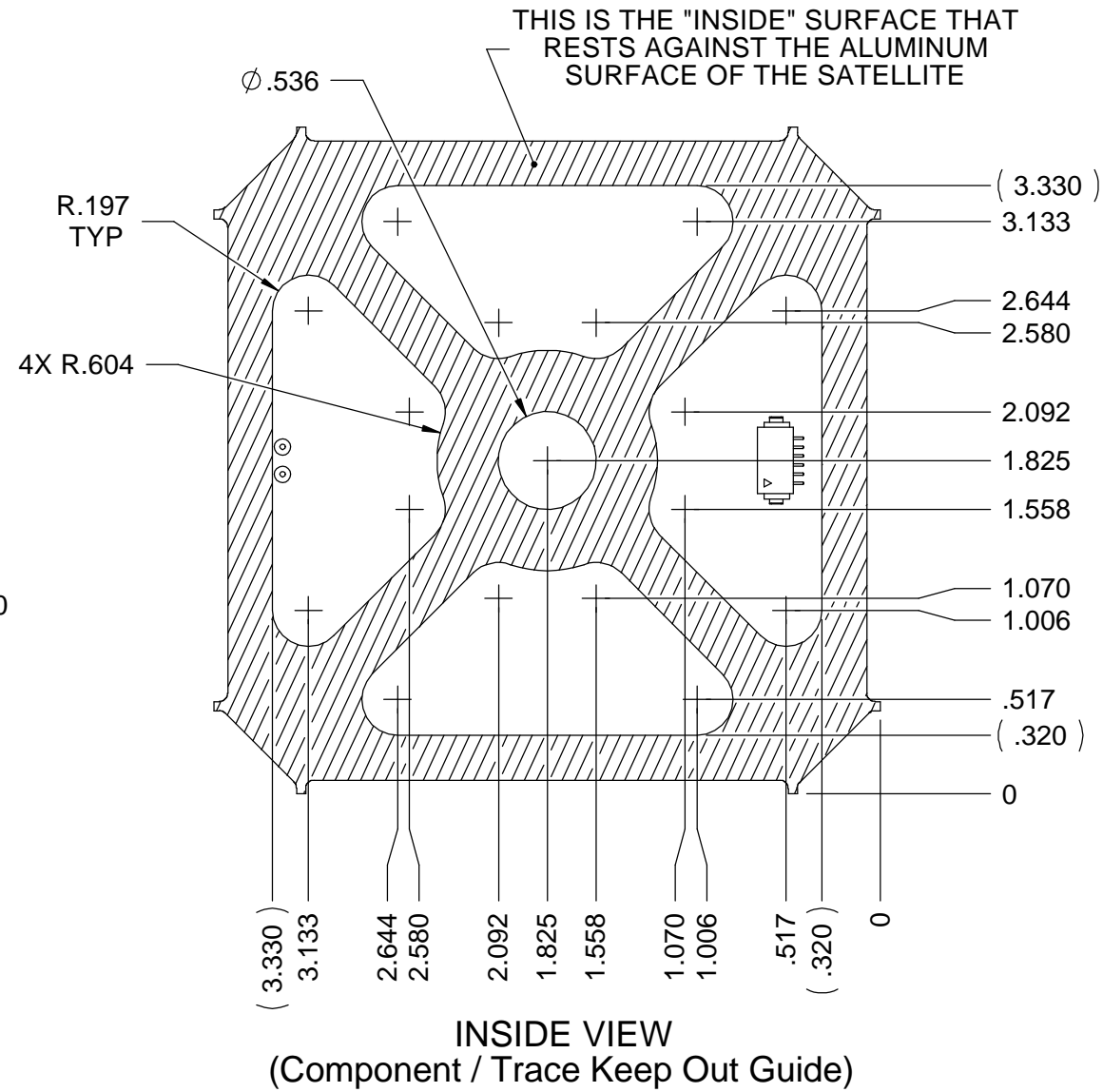
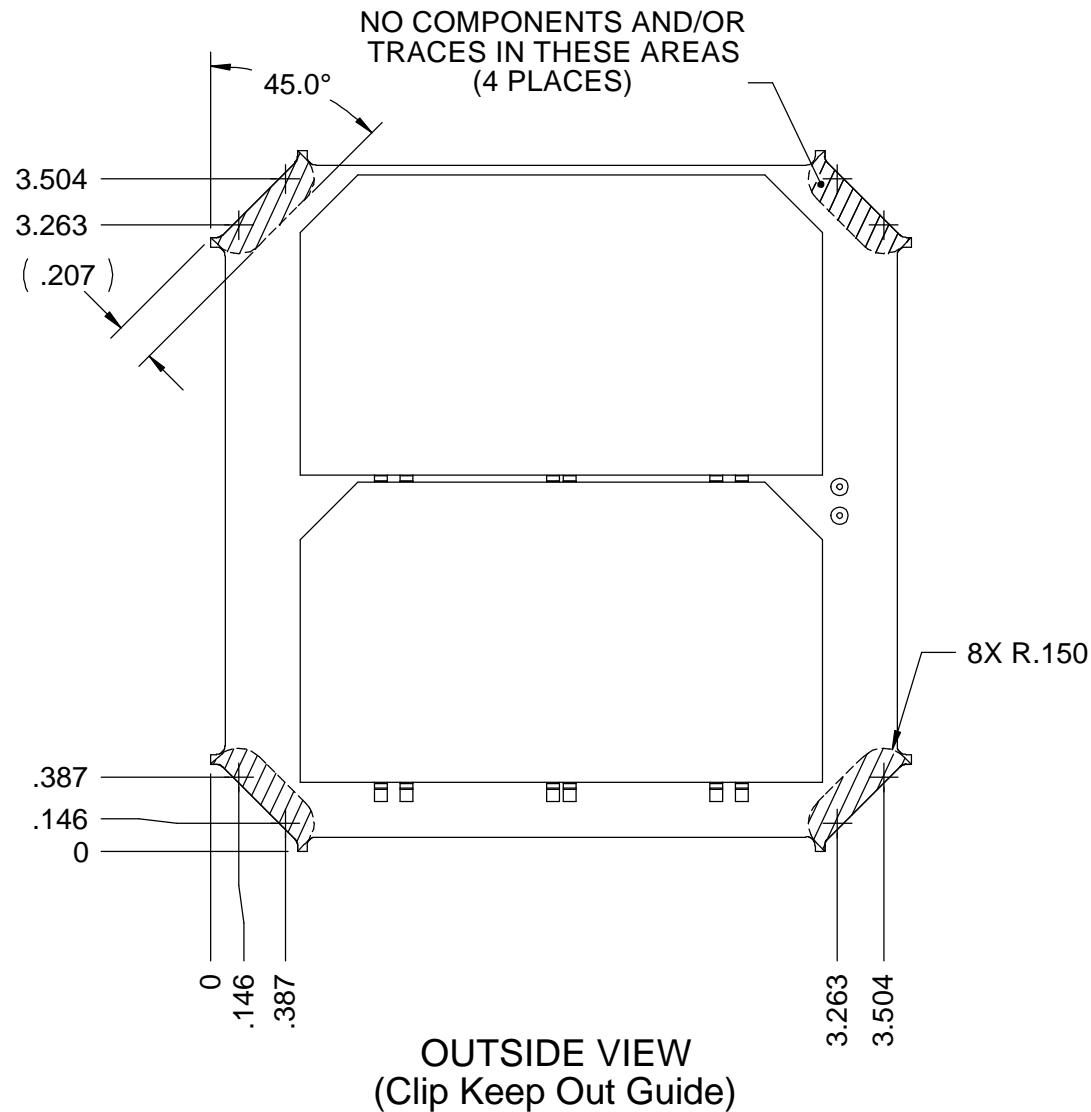
MATERIAL: SEE NOTES	FINISH: SEE NOTES	HEAT TREAT: NONE	WEIGHT:
PUMPKIN INCORPORATED		750 Naples - San Francisco - CA 94112 (415) 584-6360 ph - (415) 585-7948 fax info@pumpkininc.com	
UNLESS OTHERWISE SPECIFIED DIMENSIONS ARE IN INCHES TOLERANCES ARE:	APPROVALS	DATE	TITLE
FRACTIONS DECIMALS ANGLES	DRAWN AWR	11/07/08	PCB, End Panel Module
.X = ± .030 .XX = ± .010 ± 0° 30' .XXX = ± .005	CHECKED		SIZE B DWG. 705-00463 REV A0
CAD GENERATED DRAWING, DO NOT MANUALLY UPDATE	DO NOT SCALE DRAWING	SCALE 1:1	SHEET 1 OF 2

PROPRIETARY NOTICE

NOTICE IS HEREBY GIVEN THAT THIS DOCUMENT EMBODIES A CONFIDENTIAL PROPRIETARY DESIGN OR IS PART OF A CONFIDENTIAL PROPRIETARY DESIGN ORIGINATED BY OURSELVES OR ONE OF OUR CUSTOMERS, AND ALL DESIGN, MANUFACTURING, PREPRODUCTION USE AND SALE RIGHTS REGARDING THE SAME ARE EXPRESSLY RESERVED. IT IS SUBMITTED UNDER A CONFIDENTIAL RELATIONSHIP FOR A SPECIFIC PURPOSE, AND THE RECIPIENT BY ACCEPTING THIS DRAWING AGREES NOT TO SUPPLY OR DISCLOSE ANY INFORMATION REGARDING IT TO ANY UNAUTHORIZED PERSON, OR TO INCORPORATE IN OTHER PROJECTS, ANY SPECIAL FEATURES PECULIAR TO THIS DESIGN.


REVISION HISTORY

REV	LOC	DESCRIPTION	DATE	APP'VD



NOTES:

- 1) THIS DRAWING SHOWS WHERE IT IS SAFE TO MOUNT COMPONENTS AND/OR RUN TRACES AND EXPOSED PADS ON THE PCB.
- 2) ANY TRACES THAT EXIST IN THE SHADED AREA WILL NEED TO BE INSULATED WITH KAPTON TAPE, OR SIMILAR INSULATING MATERIAL.
- 3) THE OUTSIDE VIEW SHOWN REGARDING THE "CLIP KEEP OUT" HAVE AN *ADDITIONAL* .030" (RECOMMENDED TOLERANCE BUFFER).
- 4) THE INSIDE VIEW SHOWS THE EXACT OVERLAY OF THE OPEN AREAS ON THE BUS CHASSIS *MINUS* A .030" (RECOMMENDED TOLERANCE BUFFER).

MATERIAL: SEE NOTES	FINISH: SEE NOTES	HEAT TREAT: NONE	WEIGHT:
		750 Naples - San Francisco - CA 94112 (415) 584-6360 ph - (415) 585-7948 fax info@pumpkininc.com	
		PCB, End Panel Module	
UNLESS OTHERWISE SPECIFIED DIMENSIONS ARE IN INCHES TOLERANCES ARE:	APPROVALS	DATE	TITLE
FRACTIONS DECIMALS ANGLES	DRAWN AWR	10/07/08	SIZE B DWG. 705-00463 REV A0
.X = ± .030	CHECKED		
.XX = ± .010 ± 0° 30"	QUAL ENG		
.XXX = ± .005	DO NOT SCALE DRAWING		SCALE 1:1 SHEET 2 OF 2