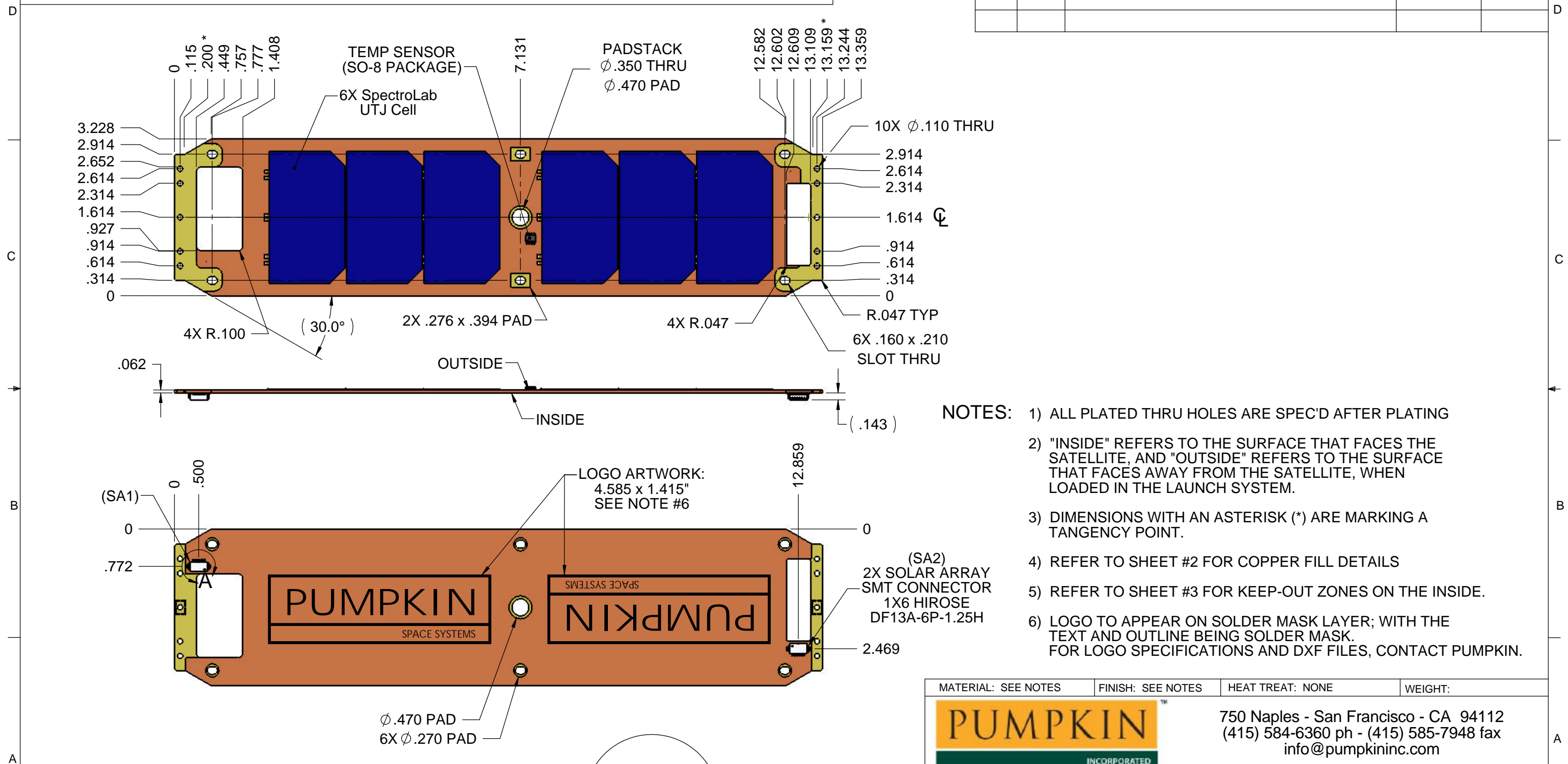


**PROPRIETARY NOTICE**

NOTICE IS HEREBY GIVEN THAT THIS DOCUMENT EMBODIES A CONFIDENTIAL PROPRIETARY DESIGN OR IS PART OF A CONFIDENTIAL PROPRIETARY DESIGN ORIGINATED BY OURSELVES OR ONE OF OUR CUSTOMERS, AND ALL DESIGN, MANUFACTURING, PREPRODUCTION USE AND SALE RIGHTS REGARDING THE SAME ARE EXPRESSLY RESERVED. IT IS SUBMITTED UNDER A CONFIDENTIAL RELATIONSHIP FOR A SPECIFIC PURPOSE, AND THE RECIPIENT BY ACCEPTING THIS DRAWING AGREES NOT TO SUPPLY OR DISCLOSE ANY INFORMATION REGARDING IT TO ANY UNAUTHORIZED PERSON, OR TO INCORPORATE IN OTHER PROJECTS, ANY SPECIAL FEATURES PECULIAR TO THIS DESIGN.

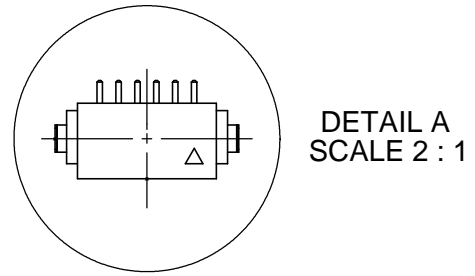
**REVISION HISTORY**

REV	LOC	DESCRIPTION	DATE	APP'VD
A0		THIS PANEL VERSION IS BASED UPON PUMPKIN P/N 705-00462 (with the cells arranged on the opposite side)	08/01/2009	AWR



- NOTES:**
- 1) ALL PLATED THRU HOLES ARE SPEC'D AFTER PLATING
  - 2) "INSIDE" REFERS TO THE SURFACE THAT FACES THE SATELLITE, AND "OUTSIDE" REFERS TO THE SURFACE THAT FACES AWAY FROM THE SATELLITE, WHEN LOADED IN THE LAUNCH SYSTEM.
  - 3) DIMENSIONS WITH AN ASTERISK (\*) ARE MARKING A TANGENCY POINT.
  - 4) REFER TO SHEET #2 FOR COPPER FILL DETAILS
  - 5) REFER TO SHEET #3 FOR KEEP-OUT ZONES ON THE INSIDE.
  - 6) LOGO TO APPEAR ON SOLDER MASK LAYER; WITH THE TEXT AND OUTLINE BEING SOLDER MASK. FOR LOGO SPECIFICATIONS AND DXF FILES, CONTACT PUMPKIN.

SOLAR ARRAY CONNECTOR			
PIN #	LABEL	PIN #	LABEL
1	POS_OUTSIDE	4	POS_INSIDE
2	RTN_OUTSIDE	5	RTN_INSIDE
3	TLM_OUTSIDE	6	TLM_INSIDE



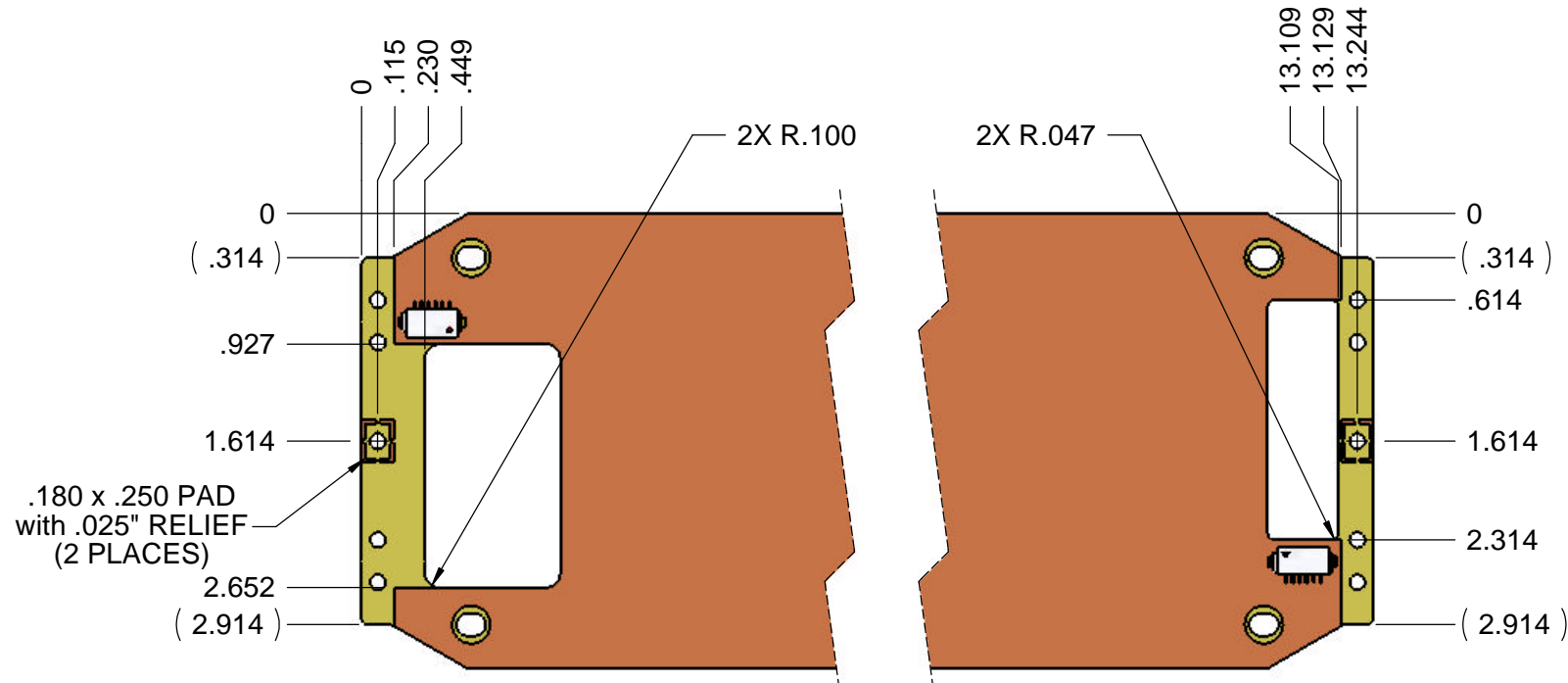
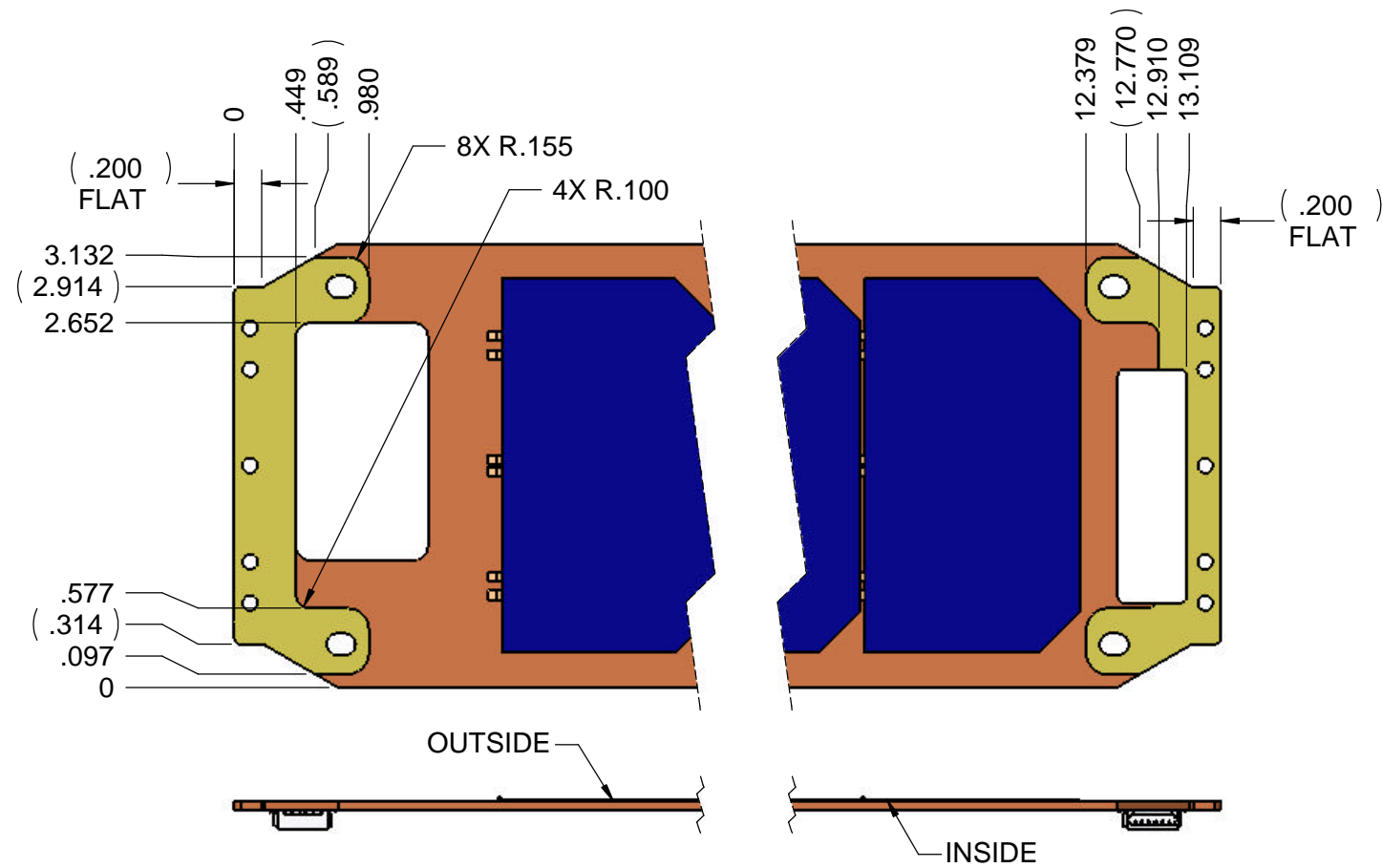
MATERIAL: SEE NOTES	FINISH: SEE NOTES	HEAT TREAT: NONE	WEIGHT:
		750 Naples - San Francisco - CA 94112 (415) 584-6360 ph - (415) 585-7948 fax info@pumpkininc.com	
UNLESS OTHERWISE SPECIFIED DIMENSIONS ARE IN INCHES TOLERANCES ARE: FRACTIONS DECIMALS ANGLES .X = ± .030 .XX = ± .010 ± 0° 30" .XXX = ± .005		APPROVALS DRAWN AWR CHECKED QUAL ENG	DATE 08/01/09 TITLE <b>PCB, Solar Array Panel, Reversed, 3U, Deployable</b>
CAD GENERATED DRAWING, DO NOT MANUALLY UPDATE DO NOT SCALE DRAWING		SIZE B DWG. <b>705-00534</b> SCALE 1:2	REV A0 SHEET 1 OF 3

**PROPRIETARY NOTICE**

NOTICE IS HEREBY GIVEN THAT THIS DOCUMENT EMBODIES A CONFIDENTIAL PROPRIETARY DESIGN OR IS PART OF A CONFIDENTIAL PROPRIETARY DESIGN ORIGINATED BY OURSELVES OR ONE OF OUR CUSTOMERS, AND ALL DESIGN, MANUFACTURING, PREPRODUCTION USE AND SALE RIGHTS REGARDING THE SAME ARE EXPRESSLY RESERVED. IT IS SUBMITTED UNDER A CONFIDENTIAL RELATIONSHIP FOR A SPECIFIC PURPOSE, AND THE RECIPIENT BY ACCEPTING THIS DRAWING AGREES NOT TO SUPPLY OR DISCLOSE ANY INFORMATION REGARDING IT TO ANY UNAUTHORIZED PERSON, OR TO INCORPORATE IN OTHER PROJECTS, ANY SPECIAL FEATURES PECULIAR TO THIS DESIGN.


**REVISION HISTORY**

REV	LOC	DESCRIPTION	DATE	APP'VD



**NOTES:**

- 1) THIS DRAWING DESCRIBES WHERE RECOMMENDED COPPER FILL AREAS SHOULD BE.
- 2) COPPER MUST EXTEND ALL THE WAY TO THE PCB EDGE.

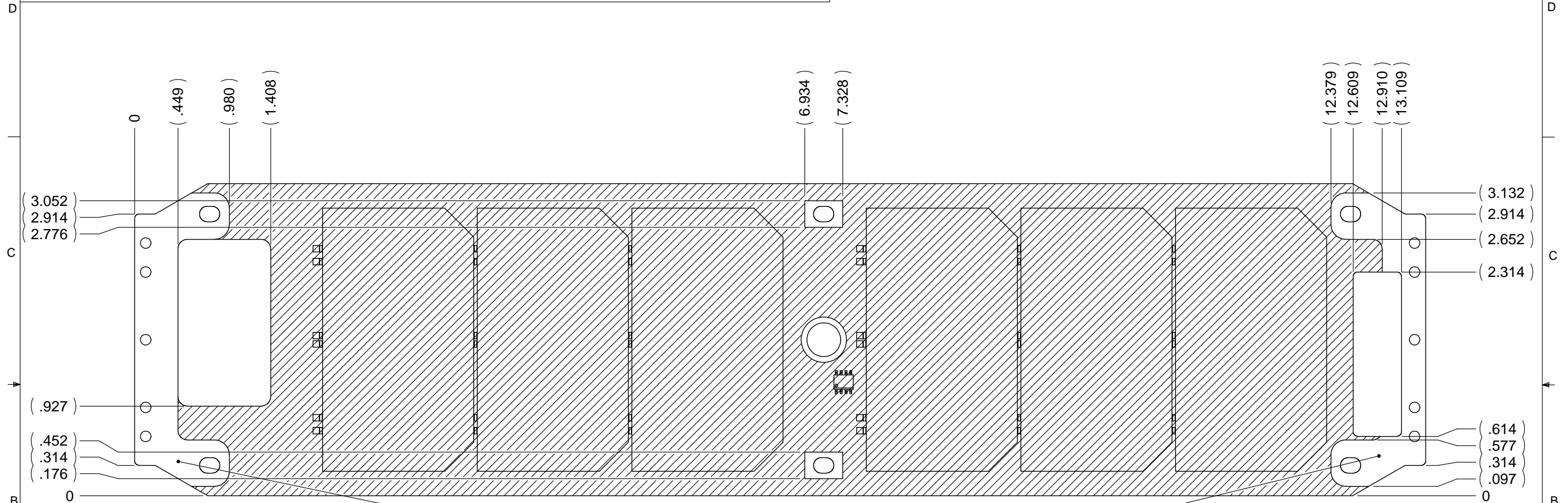
MATERIAL: SEE NOTES	FINISH: SEE NOTES	HEAT TREAT: NONE	WEIGHT:
		750 Naples - San Francisco - CA 94112 (415) 584-6360 ph - (415) 585-7948 fax info@pumpkininc.com	
UNLESS OTHERWISE SPECIFIED DIMENSIONS ARE IN INCHES TOLERANCES ARE:	APPROVALS	DATE	TITLE
FRACTIONS DECIMALS ANGLES	DRAWN AWR	08/01/09	<b>PCB, Solar Array Panel, Reversed, 3U, Deployable</b>
.X = ± .030 .XX = ± .010 ± 0° 30" .XXX = ± .005	CHECKED		SIZE B
CAD GENERATED DRAWING, DO NOT MANUALLY UPDATE	DO NOT SCALE DRAWING	SCALE 3:4	DWG. <b>705-00534</b> REV A0
			SHEET 2 OF 3

**PROPRIETARY NOTICE**

NOTICE IS HEREBY GIVEN THAT THIS DOCUMENT EMBODIES A CONFIDENTIAL PROPRIETARY DESIGN OR IS PART OF A CONFIDENTIAL PROPRIETARY DESIGN ORIGINATED BY OURSELVES OR ONE OF OUR CUSTOMERS, AND ALL DESIGN, MANUFACTURING, PREPRODUCTION USE AND SALE RIGHTS REGARDING THE SAME ARE EXPRESSLY RESERVED. IT IS SUBMITTED UNDER A CONFIDENTIAL RELATIONSHIP FOR A SPECIFIC PURPOSE, AND THE RECIPIENT BY ACCEPTING THIS DRAWING AGREES NOT TO SUPPLY OR DISCLOSE ANY INFORMATION REGARDING IT TO ANY UNAUTHORIZED PERSON, OR TO INCORPORATE IN OTHER PROJECTS, ANY SPECIAL FEATURES PECULIAR TO THIS DESIGN.

**REVISION HISTORY**


REV	LOC	DESCRIPTION	DATE	APP'VD



COPPER-FILL

**NOTES:**

- 1) THIS DRAWING DESCRIBES WHERE IT IS SAFE TO MOUNT COMPONENTS AND/OR RUN TRACES AND EXPOSED PADS ON THE PCB (SHADED AREA).

MATERIAL: SEE NOTES	FINISH: SEE NOTES	HEAT TREAT: NONE	WEIGHT:
		750 Naples - San Francisco - CA 94112 (415) 584-6360 ph - (415) 585-7948 fax info@pumpkininc.com	
UNLESS OTHERWISE SPECIFIED DIMENSIONS ARE IN INCHES TOLERANCES ARE:	APPROVALS	DATE	TITLE
FRACTIONS DECIMALS ANGLES	DRAWN AWR	08/01/09	<b>PCB, Solar Array Panel, Reversed, 3U, Deployable</b>
.X = ± .030 .XX = ± .010 ± 0° 30" .XXX = ± .005	CHECKED		SIZE B DWG. <b>705-00534</b> REV A0
CAD GENERATED DRAWING, DO NOT MANUALLY UPDATE	DO NOT SCALE DRAWING	SCALE 1:1	SHEET 3 OF 3