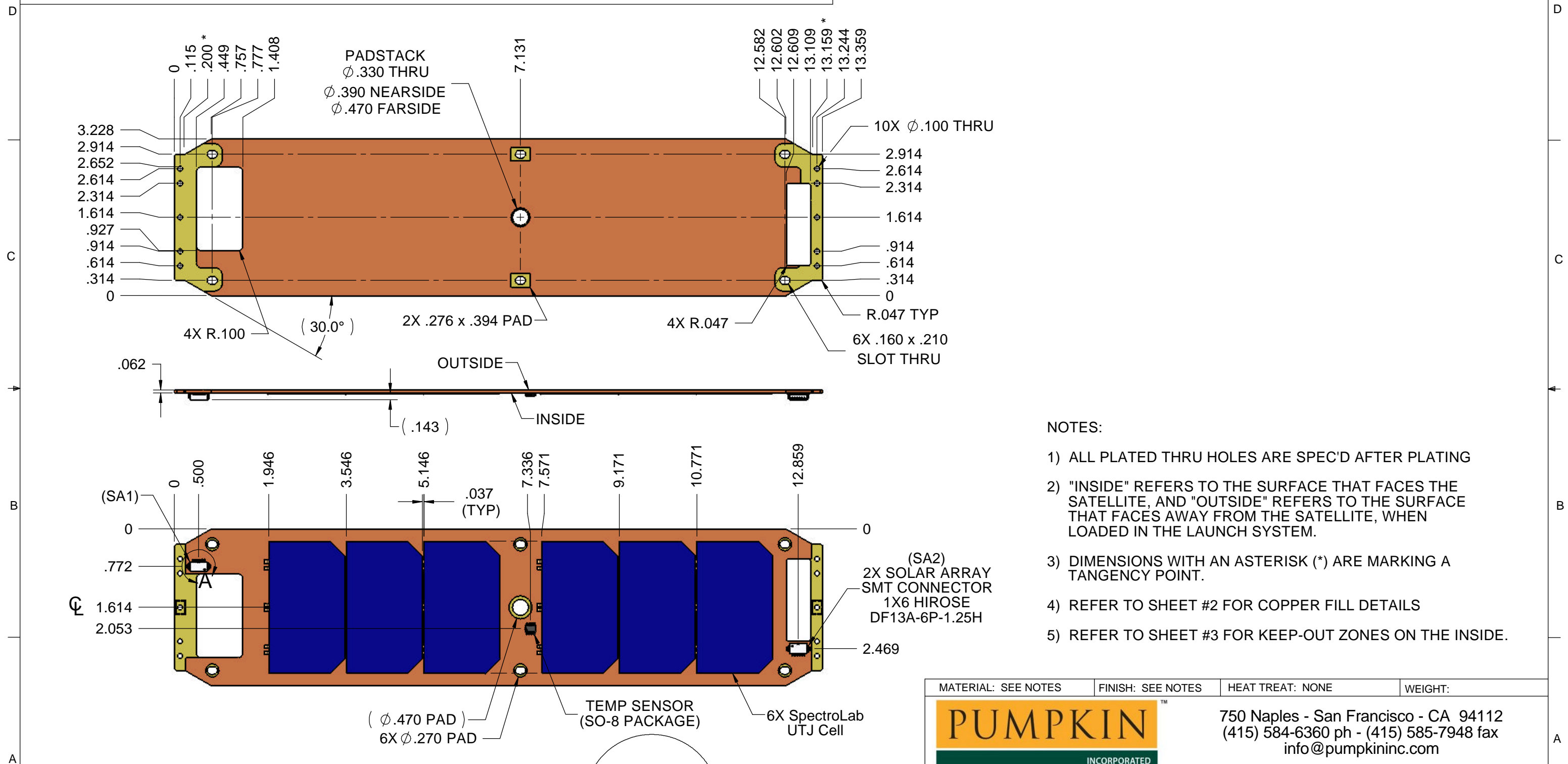


PROPRIETARY NOTICE

NOTICE IS HEREBY GIVEN THAT THIS DOCUMENT EMBODIES A CONFIDENTIAL PROPRIETARY DESIGN OR IS PART OF A CONFIDENTIAL PROPRIETARY DESIGN ORIGINATED BY OURSELVES OR ONE OF OUR CUSTOMERS, AND ALL DESIGN, MANUFACTURING, PREPRODUCTION USE AND SALE RIGHTS REGARDING THE SAME ARE EXPRESSLY RESERVED. IT IS SUBMITTED UNDER A CONFIDENTIAL RELATIONSHIP FOR A SPECIFIC PURPOSE, AND THE RECIPIENT BY ACCEPTING THIS DRAWING AGREES NOT TO SUPPLY OR DISCLOSE ANY INFORMATION REGARDING IT TO ANY UNAUTHORIZED PERSON, OR TO INCORPORATE IN OTHER PROJECTS, ANY SPECIAL FEATURES PECULIAR TO THIS DESIGN.

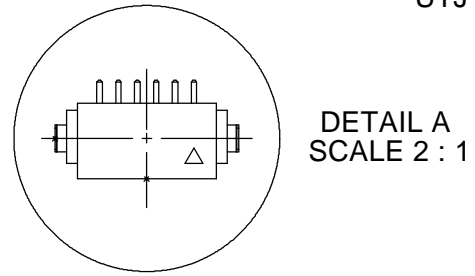
REVISION HISTORY

REV	LOC	DESCRIPTION	DATE	APP'VD



- NOTES:**
- 1) ALL PLATED THRU HOLES ARE SPEC'D AFTER PLATING
 - 2) "INSIDE" REFERS TO THE SURFACE THAT FACES THE SATELLITE, AND "OUTSIDE" REFERS TO THE SURFACE THAT FACES AWAY FROM THE SATELLITE, WHEN LOADED IN THE LAUNCH SYSTEM.
 - 3) DIMENSIONS WITH AN ASTERISK (*) ARE MARKING A TANGENCY POINT.
 - 4) REFER TO SHEET #2 FOR COPPER FILL DETAILS
 - 5) REFER TO SHEET #3 FOR KEEP-OUT ZONES ON THE INSIDE.

SOLAR ARRAY CONNECTOR			
PIN #	LABEL	PIN #	LABEL
1	POS_OUTSIDE	4	POS_INSIDE
2	RTN_OUTSIDE	5	RTN_INSIDE
3	TLM_OUTSIDE	6	TLM_INSIDE



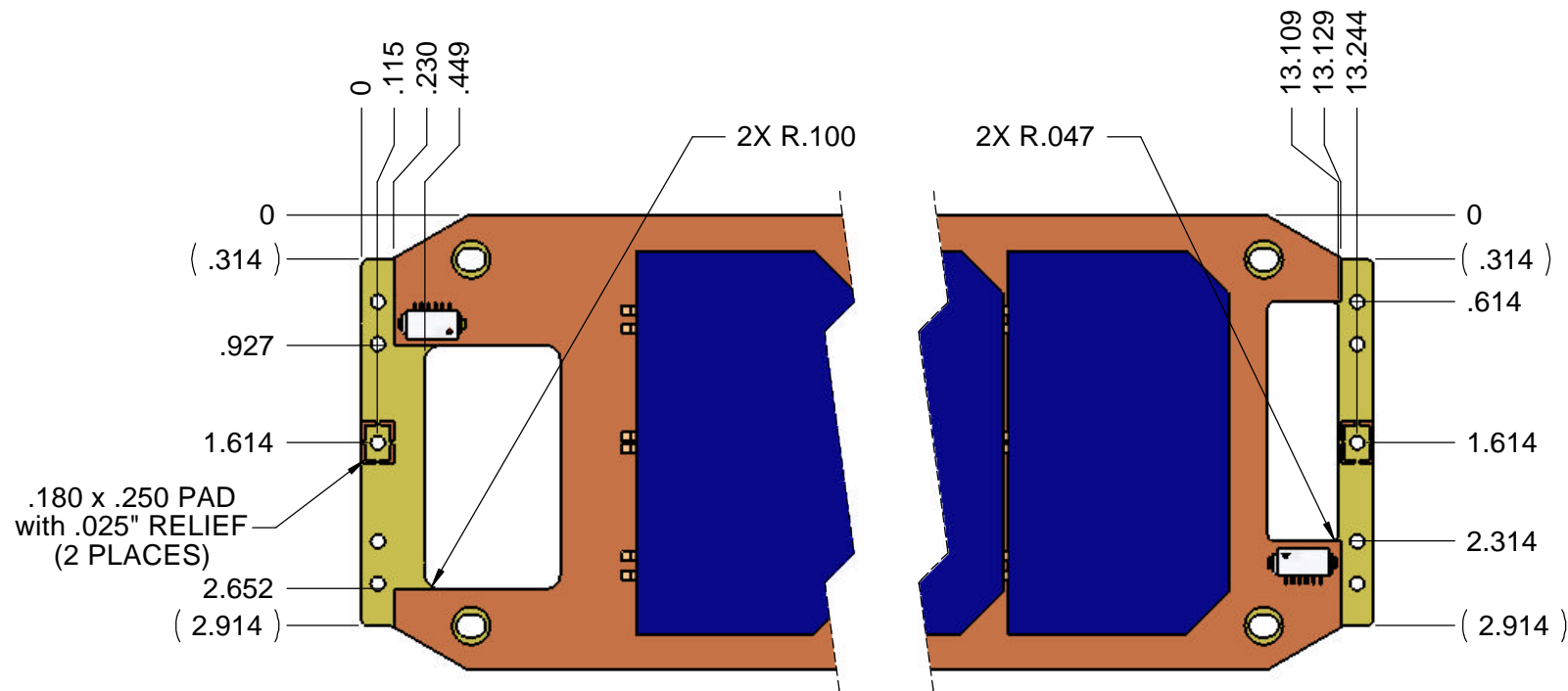
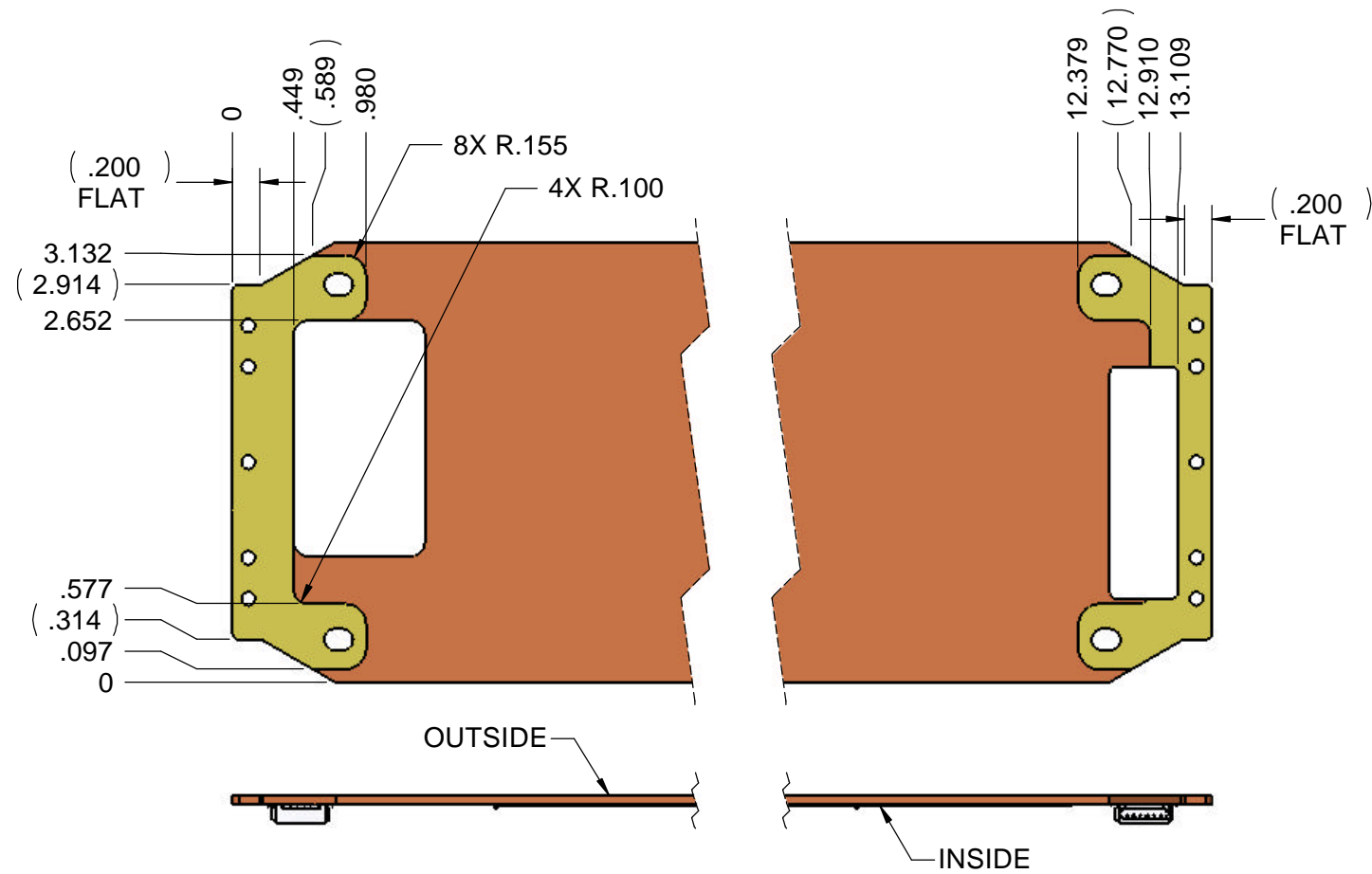
MATERIAL: SEE NOTES	FINISH: SEE NOTES	HEAT TREAT: NONE	WEIGHT:
		750 Naples - San Francisco - CA 94112 (415) 584-6360 ph - (415) 585-7948 fax info@pumpkininc.com	
		UNLESS OTHERWISE SPECIFIED DIMENSIONS ARE IN INCHES TOLERANCES ARE: FRACTIONS DECIMALS ANGLES .X = \pm .030 .XX = \pm .010 \pm 0° 30" .XXX = \pm .005	
APPROVALS	DATE	TITLE	
DRAWN AWR	10/28/08	PCB, Solar Array Panel, 3U, Deployable	
CHECKED		SIZE B	DWG. 705-00462
QUAL ENG		SCALE 1:2	REV A1
CAD GENERATED DRAWING, DO NOT MANUALLY UPDATE		DO NOT SCALE DRAWING	SHEET 1 OF 3

PROPRIETARY NOTICE

NOTICE IS HEREBY GIVEN THAT THIS DOCUMENT EMBODIES A CONFIDENTIAL PROPRIETARY DESIGN OR IS PART OF A CONFIDENTIAL PROPRIETARY DESIGN ORIGINATED BY OURSELVES OR ONE OF OUR CUSTOMERS, AND ALL DESIGN, MANUFACTURING, PREPRODUCTION USE AND SALE RIGHTS REGARDING THE SAME ARE EXPRESSLY RESERVED. IT IS SUBMITTED UNDER A CONFIDENTIAL RELATIONSHIP FOR A SPECIFIC PURPOSE, AND THE RECIPIENT BY ACCEPTING THIS DRAWING AGREES NOT TO SUPPLY OR DISCLOSE ANY INFORMATION REGARDING IT TO ANY UNAUTHORIZED PERSON, OR TO INCORPORATE IN OTHER PROJECTS, ANY SPECIAL FEATURES PECULIAR TO THIS DESIGN.


REVISION HISTORY

REV	LOC	DESCRIPTION	DATE	APP'VD
A1	A5/A7	UPDATED THE COPPER FILL AREAS (BOTH ENDS) ON THE 'INSIDE' SURFACE OF THE PCB	10/18/2008	AWR



NOTES:

- 1) THIS DRAWING DESCRIBES WHERE RECOMMENDED COPPER FILL AREAS SHOULD BE.
- 2) COPPER MUST EXTEND ALL THE WAY TO THE PCB EDGE.

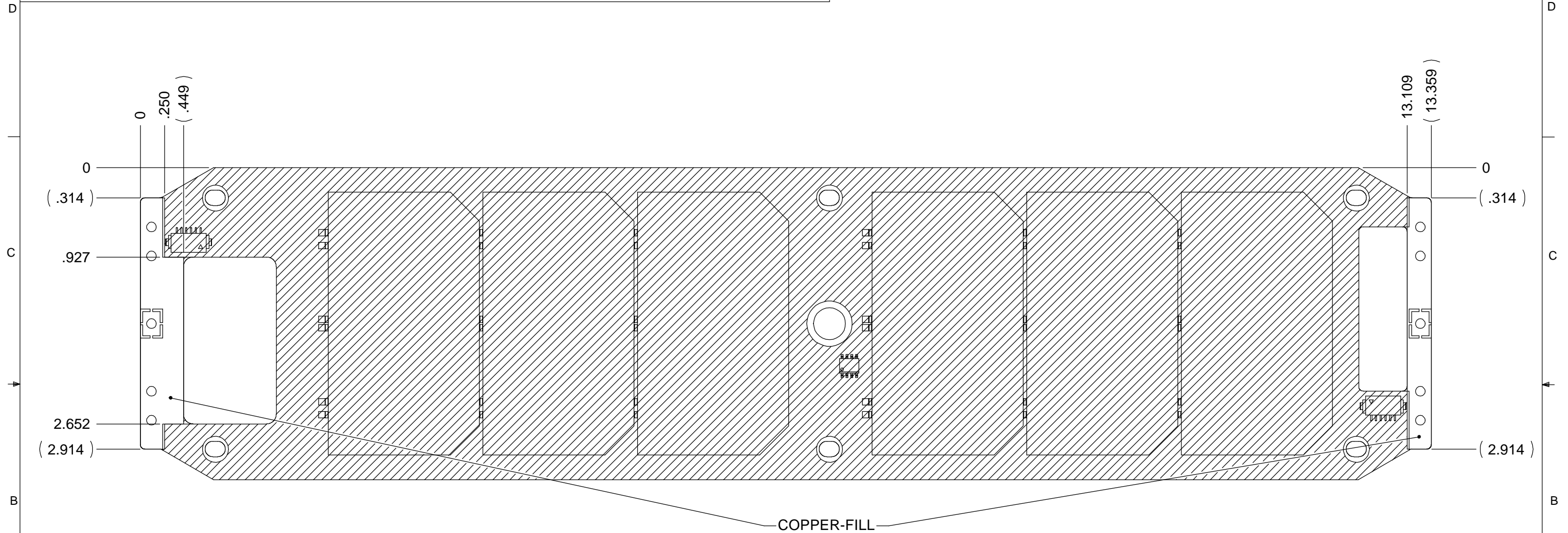
MATERIAL: SEE NOTES	FINISH: SEE NOTES	HEAT TREAT: NONE	WEIGHT:
		750 Naples - San Francisco - CA 94112 (415) 584-6360 ph - (415) 585-7948 fax info@pumpkininc.com	
UNLESS OTHERWISE SPECIFIED DIMENSIONS ARE IN INCHES TOLERANCES ARE:	APPROVALS	DATE	TITLE
FRACTIONS DECIMALS ANGLES	DRAWN AWR	10/28/08	PCB, Solar Array Panel, 3U, Deployable
.X = ± .030	CHECKED		
.XX = ± .010 ± 0° 30"	QUAL ENG		
.XXX = ± .005			SIZE B DWG. 705-00462 REV A1
CAD GENERATED DRAWING, DO NOT MANUALLY UPDATE	DO NOT SCALE DRAWING	SCALE 3:4	SHEET 2 OF 3

PROPRIETARY NOTICE

NOTICE IS HEREBY GIVEN THAT THIS DOCUMENT EMBODIES A CONFIDENTIAL PROPRIETARY DESIGN OR IS PART OF A CONFIDENTIAL PROPRIETARY DESIGN ORIGINATED BY OURSELVES OR ONE OF OUR CUSTOMERS, AND ALL DESIGN, MANUFACTURING, PREPRODUCTION USE AND SALE RIGHTS REGARDING THE SAME ARE EXPRESSLY RESERVED. IT IS SUBMITTED UNDER A CONFIDENTIAL RELATIONSHIP FOR A SPECIFIC PURPOSE, AND THE RECIPIENT BY ACCEPTING THIS DRAWING AGREES NOT TO SUPPLY OR DISCLOSE ANY INFORMATION REGARDING IT TO ANY UNAUTHORIZED PERSON, OR TO INCORPORATE IN OTHER PROJECTS, ANY SPECIAL FEATURES PECULIAR TO THIS DESIGN.


REVISION HISTORY

REV	LOC	DESCRIPTION	DATE	APP'VD



NOTES:

- 1) THIS DRAWING DESCRIBES WHERE IT IS SAFE TO MOUNT COMPONENTS AND/OR RUN TRACES AND EXPOSED PADS ON THE PCB (SHADED AREA).

MATERIAL: SEE NOTES	FINISH: SEE NOTES	HEAT TREAT: NONE	WEIGHT:
		750 Naples - San Francisco - CA 94112 (415) 584-6360 ph - (415) 585-7948 fax info@pumpkininc.com	
UNLESS OTHERWISE SPECIFIED DIMENSIONS ARE IN INCHES TOLERANCES ARE:	APPROVALS	DATE	TITLE
FRACTIONS DECIMALS ANGLES	DRAWN AWR	10/28/08	PCB, Solar Array Panel, 3U, Deployable
.X = ± .030	CHECKED		
.XX = ± .010 ± 0° 30"	QUAL ENG		
.XXX = ± .005	DO NOT SCALE DRAWING		SIZE B DWG. 705-00462 REV A1
CAD GENERATED DRAWING, DO NOT MANUALLY UPDATE	SCALE 1:1		SHEET 3 OF 3